

Windows 10

Continuous Evolution

Vito Macina

Microsoft MVP - Windows and Devices for IT
vito.macina@outlook.com

 macinando
 vitomacina

Agenda

Windows 10

- Where we are?
- Stay Current

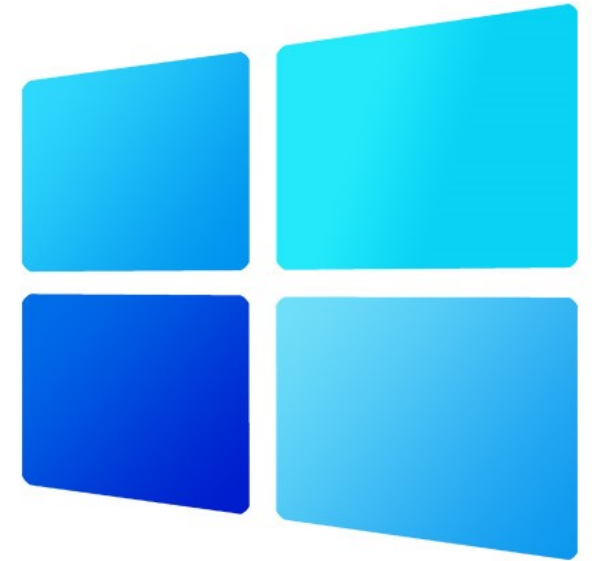
Release Evolution

- 20H2 approach
- Insider updates
- Future pills



Windows 10

WHERE WE ARE?



Digital transformation is
more urgent than ever



Digital transformation is more urgent than ever



80%

of business leaders, across all industries, intend to accelerate their digital transformation¹

¹Boston Consulting Group. "The Digital Path to Business Resilience." July 6, 2020.
<https://www.bcg.com/publications/2020/digital-path-to-business-resilience>

Growing leadership role of IT

Build resilient infrastructure
and

Embrace the new normal

- Enable work from everywhere
- Deliver best in class user experience
- Drive business results through digital transformation

"...67% of CIOs said they 'assumed leadership of high-impact initiatives' during the response.

70% of CIOs listed support for working from home as their proudest accomplishment in the pandemic response."

Quotes from Andy Rowsell-Jones, Vice President, Gartner.
"Gartner Says CIOs..." Gartner. August 11, 2020.

For end users

The latest improvements for

Sharing + Collaboration + Data insights + AI

For IT

Modern cloud servicing and insights for

Streamlined updates + Security + Lowest costs

Windows 10 for everyone

Editions

Windows 10 Home	Windows 10 Pro
Windows 10 Enterprise	Windows 10 IoT Core
Windows 10 Education	Windows 10 Mixed Reality

Configuration

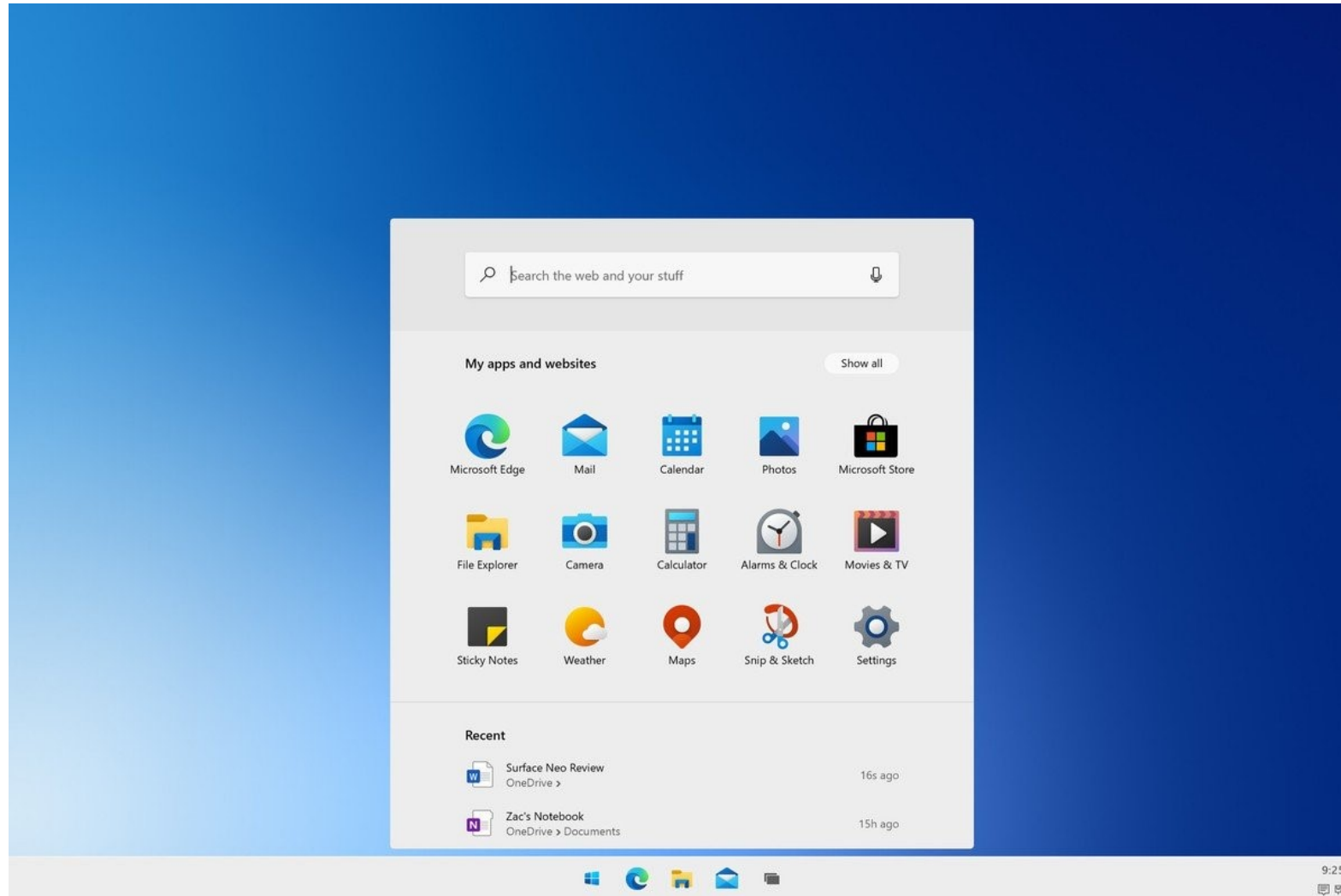
Windows 10 Home in S mode
Windows 10 Pro in S mode
Windows 10 Enterprise in S mode
Windows 10 Pro for Workstations

Devices

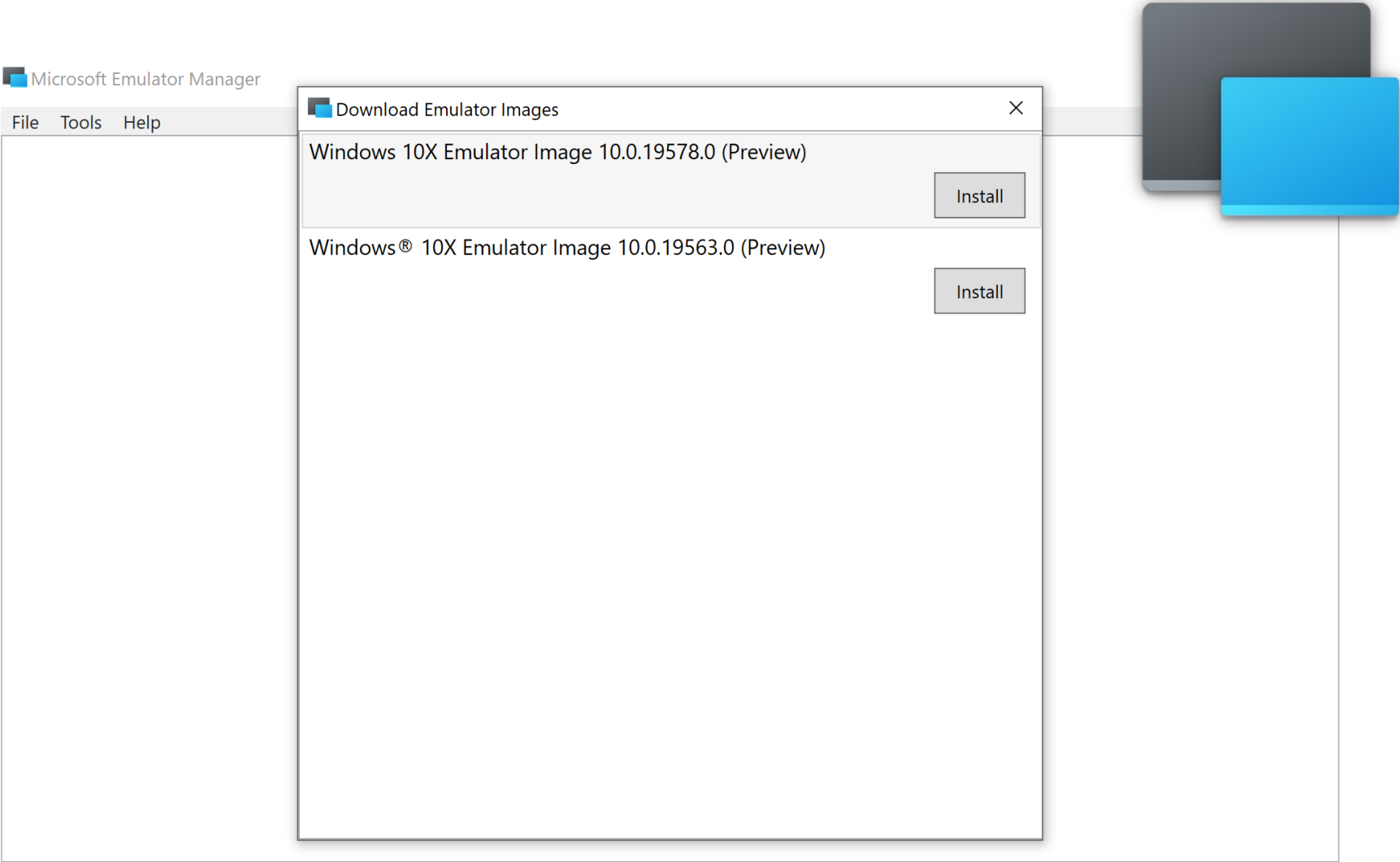
Desktop
Notebook
Workstation
Convertible
Tablet
AIO
IoT
...



Windows 10X > 2021 > Single-screen

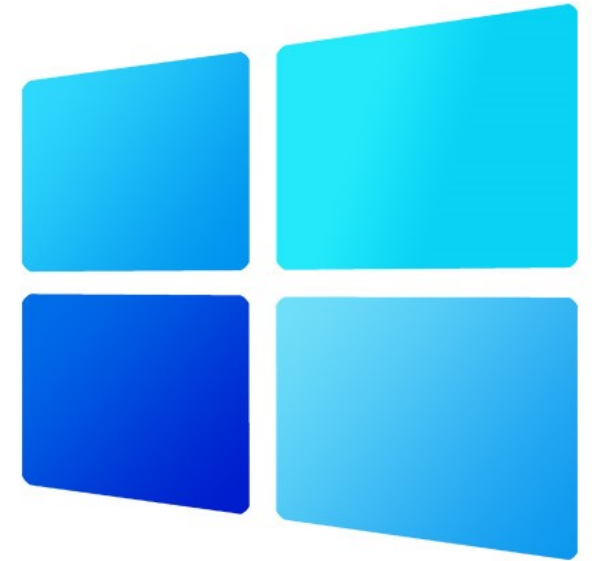


Microsoft Emulator Manager



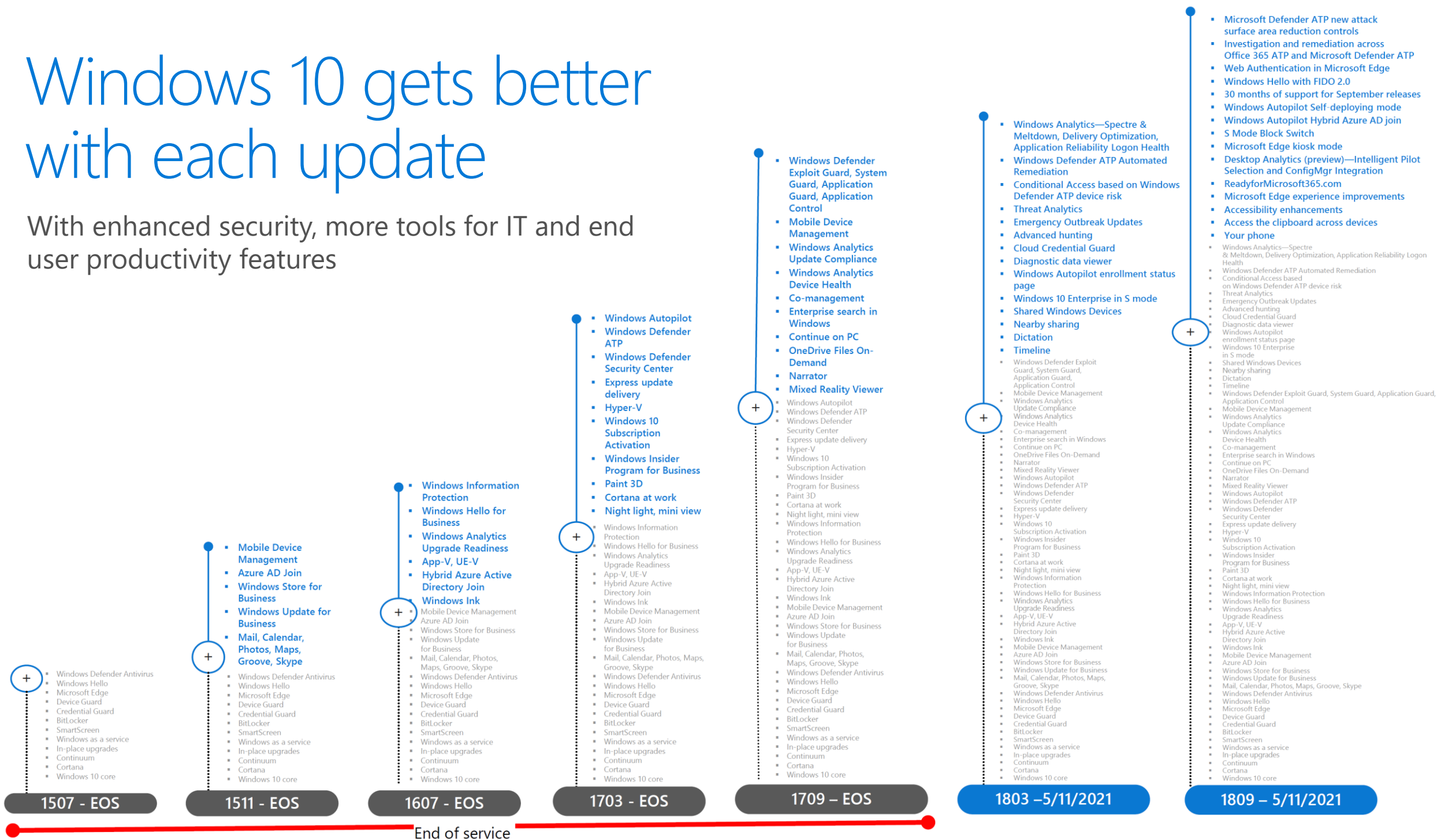
Windows 10

STAY CURRENT



Windows 10 gets better with each update

With enhanced security, more tools for IT and end user productivity features



- Windows Virtual Desktop (preview)
- Microsoft Defender Advanced Threat Protection enhancements
- Attack Surface Reduction enhancements
- Next Generation Protection enhancements
- Tamper Proofing Capabilities
- Windows Sandbox
- Application Guard enhancements
- Sign-on with password-less Microsoft accounts
- New Kaimojis and Emojis
- Accessibility Improvements
- Windows Shell enhancements
- Windows Timeline
- Device Management Policies
- Intune Security Baselines
- Enhanced Enrollment Status Page
- Windows Autopilot White Glove
- SetupDiag
- Automatic Restart Sign On (ARSO)
- Reserved Disk Space
- Improved Delivery Optimization (DO)

- Windows Analytics—Spectre & Meltdown, Delivery Optimization, Application Reliability Logon Health
- Windows Defender ATP Automated Remediation
- Conditional Access based on Windows Defender ATP device risk
- Threat Analytics
- Emergency Outbreak Updates
- Advanced hunting
- Cloud Credential Guard
- Diagnostic data viewer
- Windows Autopilot enrollment status page
- Windows 10 Enterprise in S mode
- Shared Windows Devices
- Nearby Sharing
- Dictation
- Windows Defender Exploit Guard, System Guard, Application Guard, Application Control
- Mobile Device Management
- Windows Analytics Update Compliance
- Windows Analytics Device Health
- Co-management
- Enterprise search in Windows
- Continue on PC
- OneDrive Files On-Demand
- Narrator
- Mixed Reality Viewer
- Windows Autopilot
- Microsoft Defender ATP
- Windows Defender Security Center
- Express update delivery
- Hyper-V
- Windows 10
- Subscription Activation
- Windows Insider Program for Business
- Paint 3D
- Cortana at work
- Night light, mini view
- Windows Information Protection
- Windows Hello for Business

1903 – EOS

- BitLocker key-rolling
- Calendar and schedule enhancements
- Cloud Clipboard
- CPU rotation
- Digital Assistants can activate above the lock screen
- Improved Inking
- Kiosk mode customization
- Narrator improvements
- Streamlined notifications
- TLS 1.3
- Servicing improvements for H2 builds
- Windows Autopilot Hybrid Domain Join via VPN (preview)
- Microsoft Connected Cache (preview)
- Windows Virtual Desktop (GA)
- Desktop Analytics (GA)
- Microsoft Edge experience improvements
- Accessibility enhancements
- Access the clipboard across devices
- Your phone
- Windows Analytics—Spectre & Meltdown, Delivery Optimization, Application Reliability Logon Health
- Windows Defender ATP Automated Remediation
- Conditional Access based on Windows Defender ATP device risk
- Threat Analytics
- Emergency Outbreak Updates
- Advanced hunting
- Cloud Credential Guard
- Diagnostic data viewer
- Windows Autopilot enrollment status page
- Windows 10 Enterprise in S mode
- Shared Windows Devices
- Nearby Sharing
- Dictation
- Windows Defender Exploit Guard, System Guard, Application Guard, Application Control
- Mobile Device Management
- Windows Analytics Update Compliance
- Windows Analytics Device Health
- Co-management
- Enterprise search in Windows
- Continue on PC
- OneDrive Files On-Demand
- Narrator
- Mixed Reality Viewer
- Windows Autopilot
- Microsoft Defender ATP
- Windows Defender Security Center
- Express update delivery
- Hyper-V
- Windows 10
- Subscription Activation
- Windows Insider Program for Business
- Paint 3D
- Cortana at work
- Night light, mini view
- Windows Information Protection
- Windows Virtual Desktop (preview)
- Microsoft Defender Advanced Threat Protection enhancements
- Attack Surface Reduction enhancements
- Next Generation Protection enhancements
- Tamper Proofing Capabilities

- Windows Analytics—Spectre & Meltdown, Delivery Optimization, Application Reliability Logon Health
- Windows Defender ATP Automated Remediation
- Conditional Access based on Windows Defender ATP device risk
- Threat Analytics
- Emergency Outbreak Updates
- Advanced hunting
- Cloud Credential Guard
- Diagnostic data viewer
- Windows Autopilot enrollment status page
- Windows 10 Enterprise in S mode
- Shared Windows Devices
- Nearby Sharing
- Dictation
- Windows Defender Exploit Guard, System Guard, Application Guard, Application Control
- Mobile Device Management
- Windows Analytics Update Compliance
- Windows Analytics Device Health
- Co-management
- Enterprise search in Windows
- Continue on PC
- OneDrive Files On-Demand
- Narrator
- Mixed Reality Viewer
- Windows Autopilot
- Microsoft Defender ATP
- Windows Defender Security Center
- Express update delivery
- Hyper-V
- Windows 10
- Subscription Activation
- Windows Insider Program for Business
- Paint 3D
- Cortana at work
- Night light, mini view
- Windows Information Protection
- Windows Virtual Desktop (preview)
- Microsoft Defender Advanced Threat Protection enhancements
- Attack Surface Reduction enhancements
- Next Generation Protection enhancements
- Tamper Proofing Capabilities

1909 – 5/10/2022

- MSIX installation options
- Task Manager improvements
- Settings page multi-select and list management
- Bluetooth pairing improvements
- Network camera support
- More Kaomoji
- Application Guard for Edge and Office
- WSL v2
- East Asian IMEs
- BitLocker key-rolling enhancements
- Calendar and schedule enhancements
- Cloud Clipboard
- CPU rotation
- Digital Assistants can activate above the lock screen
- Improved Inking
- Kiosk mode customization
- Narrator improvements
- Streamlined notifications
- TLS 1.3
- Servicing improvements for H2 builds
- Windows Autopilot Hybrid Domain Join via VPN (preview)
- Microsoft Connected Cache (preview)
- Windows Virtual Desktop (GA)
- Desktop Analytics (GA) Microsoft Edge experience improvements
- Access the clipboard across devices
- Your phone
- Windows Analytics—Spectre & Meltdown, Delivery Optimization, Application Reliability Logon Health
- Windows Defender ATP Automated Remediation
- Conditional Access based on Windows Defender ATP device risk
- Threat Analytics
- Emergency Outbreak Updates
- Advanced hunting
- Cloud Credential Guard
- Diagnostic data viewer
- Windows Autopilot enrollment status page
- Windows 10 Enterprise in S mode
- Shared Windows Devices
- Nearby Sharing
- Dictation
- Windows Defender Exploit Guard, System Guard, Application Guard, Application Control
- Mobile Device Management
- Windows Analytics Update Compliance
- Windows Analytics Device Health
- Co-management
- Enterprise search in Windows
- Continue on PC
- OneDrive Files On-Demand
- Narrator
- Mixed Reality Viewer
- Windows Autopilot
- Microsoft Defender ATP
- Windows Defender Security Center
- Express update delivery
- Hyper-V
- Windows 10
- Subscription Activation
- Windows Insider Program for Business

- Paint 3D
- Cortana at work
- Night light, mini view
- Windows Information Protection
- Windows Virtual Desktop (preview)
- Microsoft Defender Advanced Threat Protection enhancements
- Attack Surface Reduction enhancements
- Next Generation Protection enhancements
- Tamper Proofing Capabilities
- Windows Sandbox
- Application Guard enhancements
- Sign-on with password-less Microsoft accounts
- New Kaimojis and Emojis
- Accessibility Improvements
- Windows Shell enhancements
- Windows Timeline
- Device Management Policies
- Intune Security Baselines
- Enhanced Enrollment Status Page
- Windows Autopilot White Glove
- SetupDiag
- Automatic Restart Sign On (ARSO)
- Reserved Disk Space
- Improved Delivery Optimization (DO)
- Windows Hello for Business
- Windows Analytics Upgrade Readiness
- App-V, UE-V
- Hybrid Azure Active Directory Join
- Windows Ink
- Mobile Device Management
- Azure AD Join
- Windows Store for Business
- Windows Update for Business
- Mail, Calendar, Photos, Maps, Groove, Skype
- Windows Defender Antivirus
- Windows Hello
- Microsoft Edge
- Device Guard
- Credential Guard
- BitLocker
- SmartScreen
- Windows as a service
- In-place upgrades
- Continuum
- Cortana
- Windows 10 core
- Windows Defender ATP new attack surface area reduction controls
- Investigation and remediation across Office 365 ATP and Windows Defender ATP
- Web Authentication in Microsoft Edge
- Windows Hello with FIDO 2.0
- 30 months of support for September releases
- Windows Autopilot Self-deploying mode
- Windows Autopilot Hybrid Azure AD Join
- S Mode Block Switch
- Microsoft Edge kiosk mode
- Desktop Analytics (preview)—Intelligent Pilot Selection and ConfigMgr Integration
- ReadyforMicrosoft365.com

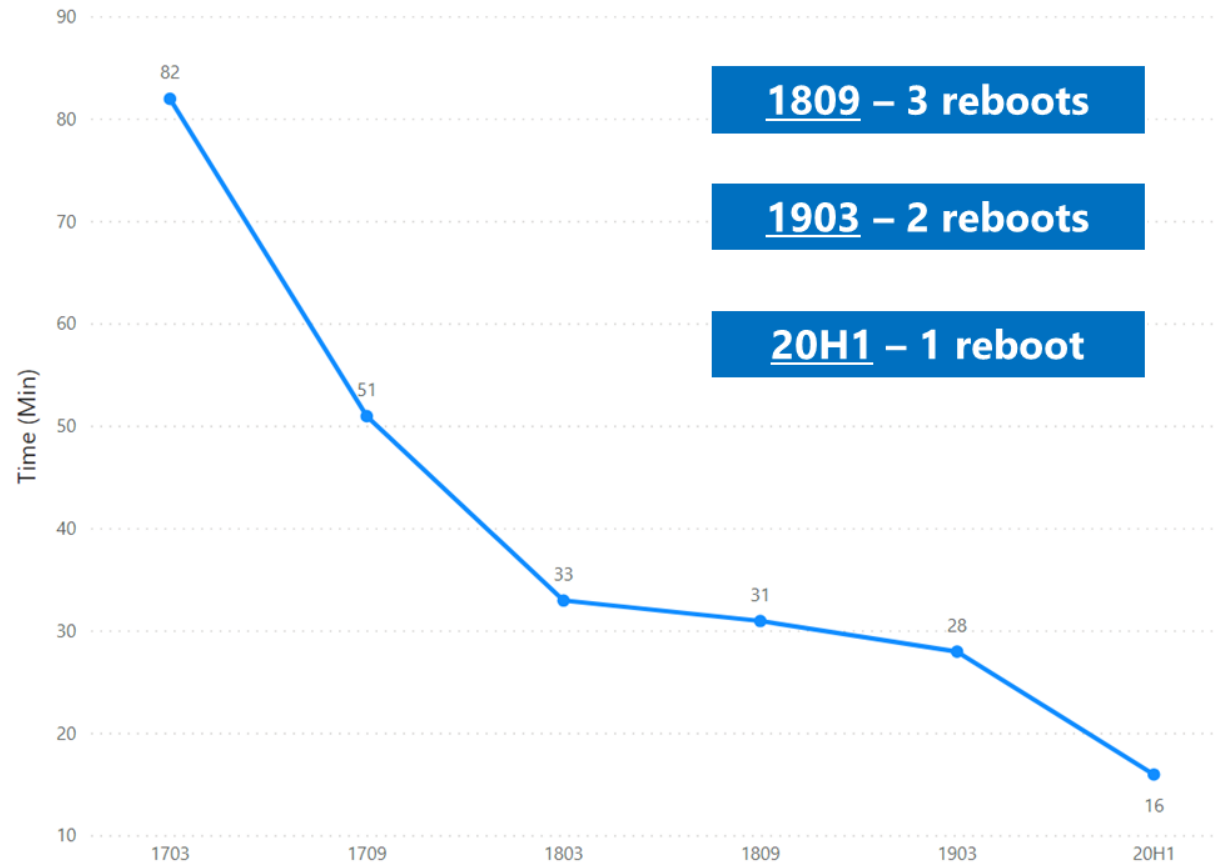
2004 – 12/14/2021

- Microsoft Edge
- Windows Defender Application Guard for Office
- Windows Hello Secure Bio
- Enhanced MDM capabilities
- Improved OOBE experience
- Enhanced Autopilot capabilities
- Improved Tablet experience
- BitLocker key-rolling enhancements
- Calendar and schedule enhancements
- Cloud Clipboard
- CPU rotation
- Digital Assistants can activate above the lock screen
- Improved Inking
- Kiosk mode customization
- Narrator improvements
- Streamlined notifications
- TLS 1.3
- Servicing improvements for H2 builds
- Windows Autopilot Hybrid Domain Join via VPN (preview)
- Microsoft Connected Cache (preview)
- Windows Virtual Desktop (GA)
- Desktop Analytics (GA) Microsoft Edge experience improvements
- Accessibility enhancements
- Access the clipboard across devices
- Your phone
- Windows Analytics—Spectre & Meltdown, Delivery Optimization, Application Reliability Logon Health
- Windows Defender ATP Automated Remediation
- Conditional Access based on Windows Defender ATP device risk
- Threat Analytics
- Emergency Outbreak Updates
- Advanced hunting
- Cloud Credential Guard
- Diagnostic data viewer
- Windows Autopilot enrollment status page
- Windows 10 Enterprise in S mode
- Shared Windows Devices
- Nearby Sharing
- Dictation
- Timeline
- Windows Defender Exploit Guard, System Guard, Application Guard, Application Control
- Mobile Device Management
- Windows Analytics Update Compliance
- Windows Analytics Device Health
- Co-management
- Enterprise search in Windows
- Continue on PC
- OneDrive Files On-Demand
- Narrator
- Mixed Reality Viewer
- Windows Autopilot
- Microsoft Defender ATP
- Windows Defender Security Center
- Express update delivery
- Hyper-V
- Windows 10
- Subscription Activation
- Windows Insider Program for Business
- Paint 3D
- Cortana at work
- Night light, mini view
- Windows Information Protection
- Windows Virtual Desktop (preview)
- Microsoft Defender Advanced Threat Protection enhancements
- Attack Surface Reduction enhancements
- Next Generation Protection enhancements
- Tamper Proofing Capabilities
- Windows Sandbox
- Application Guard enhancements
- Sign-on with password-less Microsoft accounts
- New Kaimojis and Emojis
- Accessibility Improvements
- Windows Shell enhancements
- Device Management Policies
- Intune Security Baselines
- Enhanced Enrollment Status Page
- Windows Autopilot White Glove
- SetupDiag
- Automatic Restart Sign On (ARSO)
- Reserved Disk Space
- Improved Delivery Optimization (DO)
- Windows Hello for Business
- Windows Analytics Upgrade Readiness
- App-V, UE-V
- Hybrid Azure Active Directory Join
- Windows Ink
- Mobile Device Management
- Azure AD Join
- Windows Store for Business
- Windows Update for Business
- Mail, Calendar, Photos, Maps, Groove, Skype
- Windows Defender Antivirus
- Windows Hello
- Microsoft Edge
- Device Guard
- Credential Guard
- BitLocker
- SmartScreen
- Windows as a service
- In-place upgrades
- Continuum
- Cortana
- Windows 10 core
- Windows Defender ATP new attack surface area reduction controls
- Investigation and remediation across Office 365 ATP and Windows Defender ATP
- Web Authentication in Microsoft Edge
- Windows Hello with FIDO 2.0
- 30 months of support for September releases
- Windows Autopilot Self-deploying mode
- Windows Autopilot Hybrid Azure AD Join
- S Mode Block Switch
- Microsoft Edge kiosk mode
- Desktop Analytics (preview)—Intelligent Pilot Selection and ConfigMgr Integration
- ReadyforMicrosoft365.com

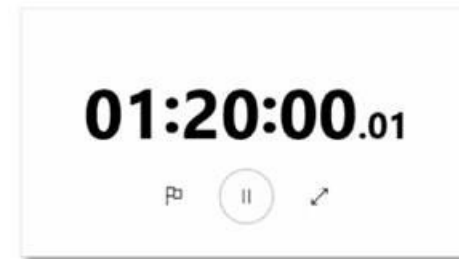
20H2 – 5/9/2023

Behind the scenes, over the years

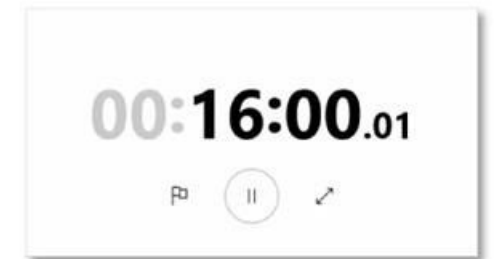
Feature Update median offline time



Windows 10,
version 1809



Windows 10,
version 2004



Behind the scenes, over the years

- Reducing offline time
- Lowering bandwidth consumption
- Quiet failover and roll-back

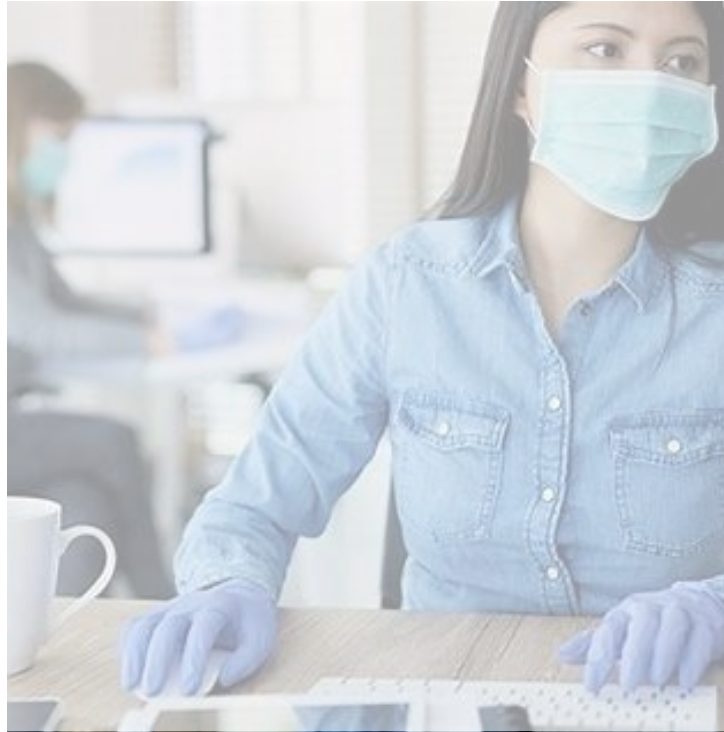
More recently

- HUGE improvements for Windows Update for Business
- Combined LCU+SSU

Top improvements since last year



Easier discoverability of optional updates (drivers, etc.)



Monthly media refreshes available in VLSC for several Windows 10 OS versions



[WSUS is secure by default, requiring HTTPS for connections](#)

Release Evolution

20H2 APPROACH



2XHY

Month 202X

20H2

October 2020

Understanding Windows 10, version 20H2

- Windows 10, versions 2004 and 20H2 share a common core operating system with an identical set of system files.
- Version 20H2 is included in the monthly quality update for Windows 10, version 2004 (released September 8, 2020)
- New features will remain dormant until they are turned on through the “enablement package,” a small, quick-to-install “master switch” that activates the Windows 10, version 20H2 features.



Overview Windows 10, version 20H2

- Update to 20H2 using Quality Update process and experience
- New features delivered inside LCU via Servicing
- 30 months of support for Enterprise e Education editions

Windows 10 20H2 contains 4 components

- **2004** - Any 19041.xxx build
- **LCU** - Latest Cumulative Update with 20H2 features "turned off"
- **SSU** - Servicing Stack Update that makes eKB installable
- **eKB** - Enablement KB that "turns on" the 20H2 features and marks the system as 20H2

Deploying Windows 10, version 20H2



Starting Windows Version	Deployment Behavior
Windows 7	No changes
Windows 10, version 1803 or earlier	No changes
Windows 10, version 2004	Faster update to Windows 10, version 20H2

Deploying Windows 10, version 20H2 (WSUS)

Starting Windows version	Deployment
Windows 7	No changes.
Windows 10, version 1803 or earlier	No changes. Windows 10, version 20H2 media is available on general availability to all the channels as earlier Windows 10 releases.
Windows 10, version 2004	"Feature Update through Windows 10, version 20H2 Enablement Package" (KB4562830) or Windows 10, version 20H2 media.

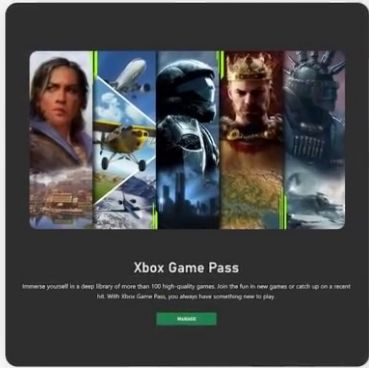
More details about 20H2?



More details about 20H2?



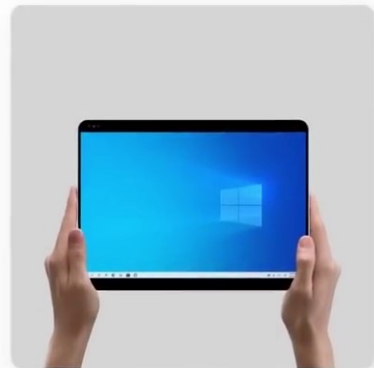
Theme-aware Start tiles



Xbox Game Pass for PC
(Microsoft Store download)



Microsoft Edge Tabs in Alt + Tab



Tablet posture improvements



Settings improvements



Notifications improvements



Personalized taskbar

Release Evolution

INSIDER UPDATES



"Right now we're releasing Windows 10, and because Windows 10 is the last version of Windows, we're all still working on Windows 10."

Jerry Nixon – Software Development Engineer – Ignite 2015

Windows as a Service, you remember?



Quality Updates

A single cumulative update each month with no new features

- Security fixes, reliability fixes, bug fixes, etc.
- Supersedes the previous month's update

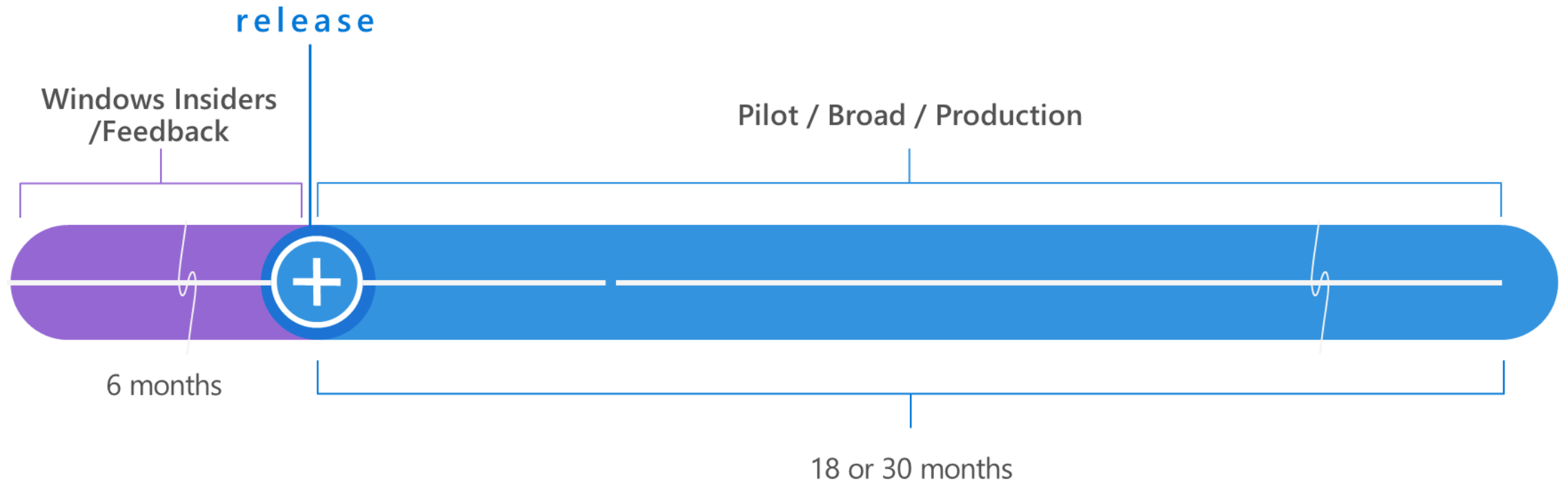


Feature Updates

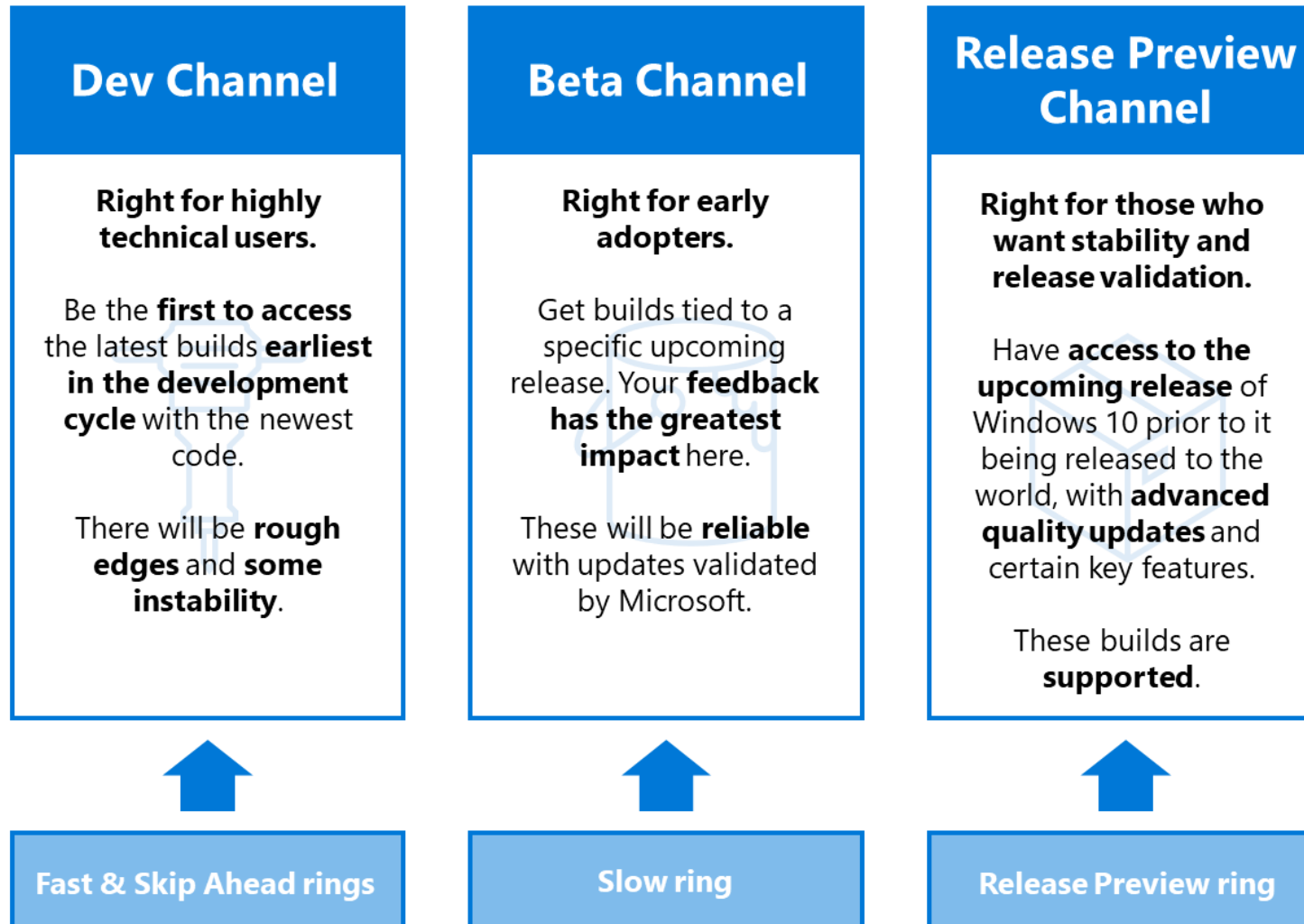
Twice per year with new capabilities

- New features and innovation APIs and security capabilities
- Very reliable, with built-in rollback capabilities
- Simple deployment using in-place upgrade, driven by existing tools
- Try them out with Insider Preview

Windows 10 Release Lifecycle



Windows 10 Rings become Channels



Windows 10 Channels, understanding updates

Dev, Beta, Release Preview Channels

Major builds

Can include new features, updates, bug fixes, application changes, and more.

Beta, Release Preview Channels

Minor builds

Can include small bug fixes, updates, or changes that work with a major build that's already been released.

Windows 10 aligns Office

	Windows	Office
<p>Right for highly technical users and developers.</p> <p>Be the first to access the latest builds earliest in the development cycle with the newest code.</p> <p>There will be rough edges and some instability.</p>	Dev Channel	N/A
<p>Right for early adopters and IT Pros who want more reliable builds that are still in development.</p> <p>See what's coming up next and help validate new features.</p>	Beta Channel	Beta Channel
<p>Right for those who want early access to upcoming releases.</p> <p>Where companies preview and validate upcoming releases before broad deployment.</p> <p>These are supported.</p>	Release Preview Channel	Current or Semi-Annual Preview Channel

Windows 10 Channels

Fast ring = Dev Channel

Slow ring = Beta Channel

Release Preview ring = Release Preview Channel

Windows lifecycle fact sheet

Edition	Released first half of year (H1)	Released second half of year (H2)
Windows 10 Enterprise Windows 10 Education Windows 10 IoT Enterprise	18 months from release date	30 months from release date
Windows 10 Pro Windows 10 Pro Education Windows 10 Pro for Workstations Windows 10 Home ¹	18 months from release date	

¹ Home edition does not support the deferral of feature updates and will therefore typically receive a new version of Windows 10 prior to the end-of-servicing date shown.

Windows lifecycle fact sheet

Windows 10 version history	Date of availability	EOS for Home, Pro, Pro Education, Pro for Workstations and IoT Core	EOS for Enterprise, Education and IoT Enterprise
Windows 10, version 20H2	October 20, 2020	May 10, 2022	May 9, 2023**
Windows 10, version 2004	May 27, 2020	December 14, 2021	December 14, 2021
Windows 10, version 1909	November 12, 2019	May 11, 2021	May 10, 2022**
Windows 10, version 1903	May 21, 2019	End of service	End of service
Windows 10, version 1809	November 13, 2018	End of service	May 11, 2021**
Windows 10, version 1803	April 30, 2018	End of service	May 11, 2021*

** Serviced for 30 months from release date

* [Revised end of service date for Windows 10, version 1803](#)

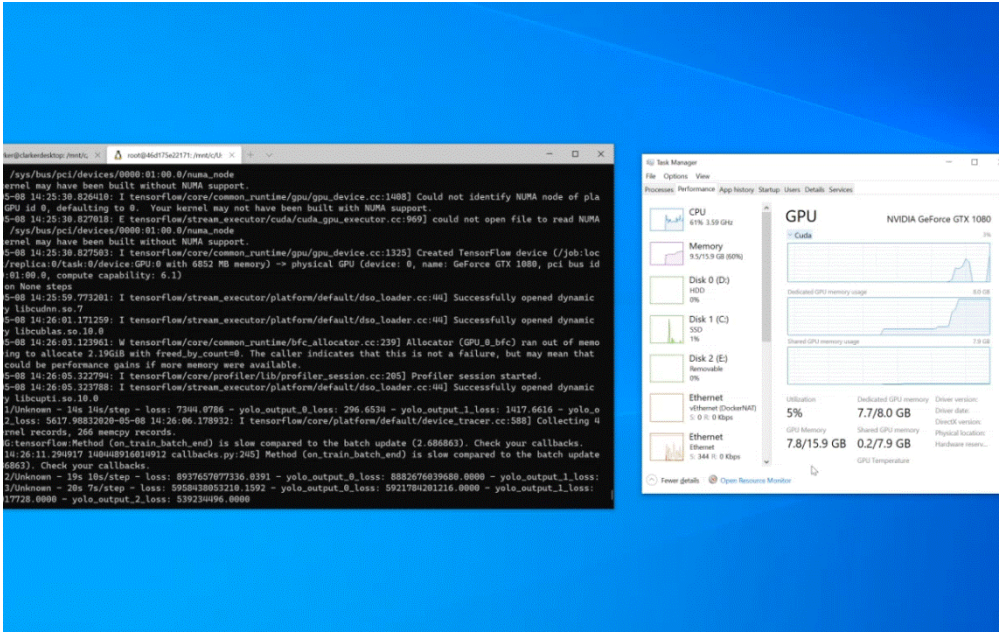
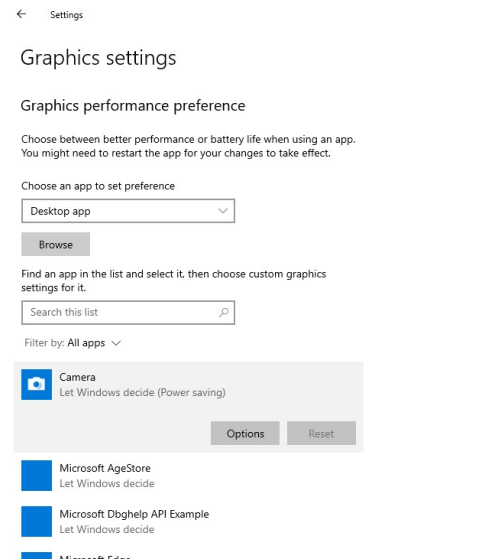
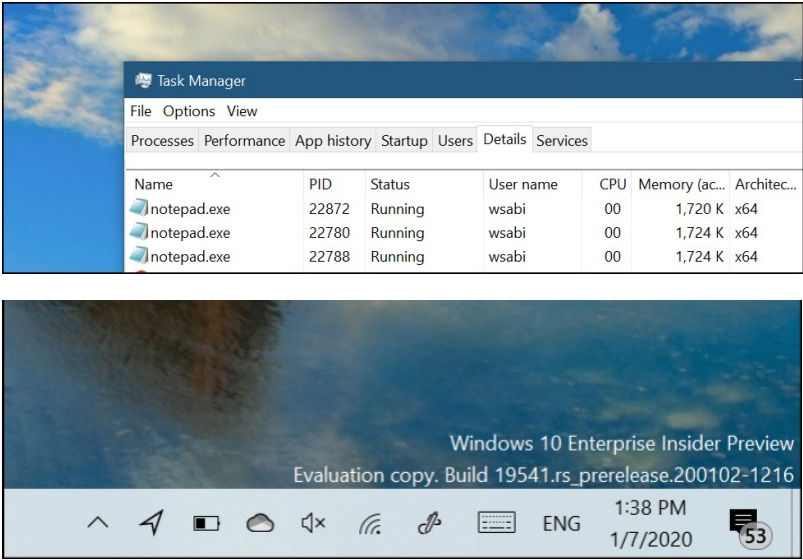
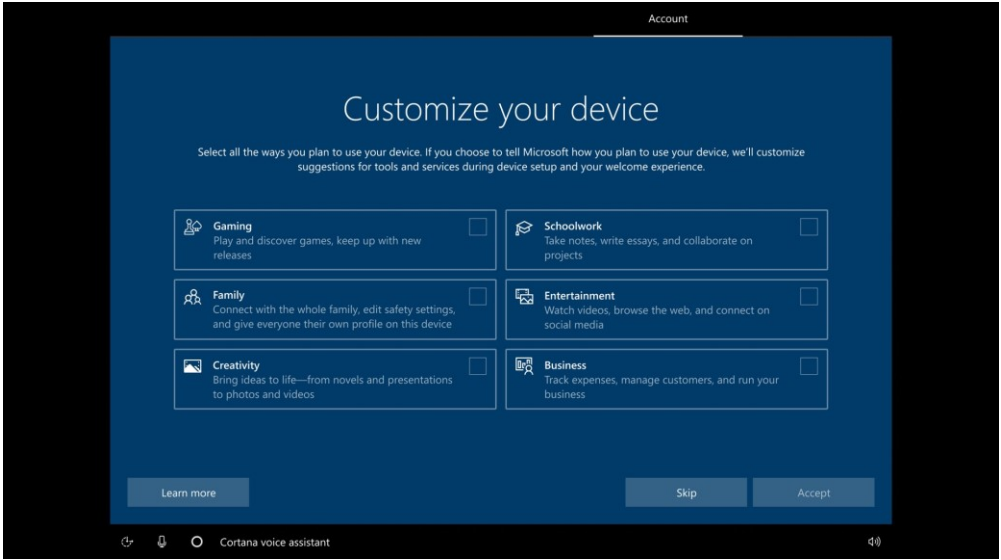
Windows lifecycle fact sheet

Windows 10 version history	Date of availability	Mainstream support end date	Extended support end date
Windows 10 Enterprise LTSC 2019 Windows 10 IoT Enterprise LTSC 2019	November 13, 2018	January 9, 2024	January 9, 2029
Windows 10 Enterprise 2016 LTSC Windows 10 IoT Enterprise 2016 LTSC	August 2, 2016	October 12, 2021	October 13, 2026
Windows 10 Enterprise 2015 LTSC Windows 10 IoT Enterprise 2015 LTSC	July 29, 2015	End of service	October 14, 2025

Road to

FUTURE PILLS





Storage

Storage Sense can automatically free up space by getting rid of files you don't need, like temporary files and content in your recycle bin.



[Configure Storage Sense or run it now](#)

User cleanup recommendations

Over 5.00 GB of storage available.

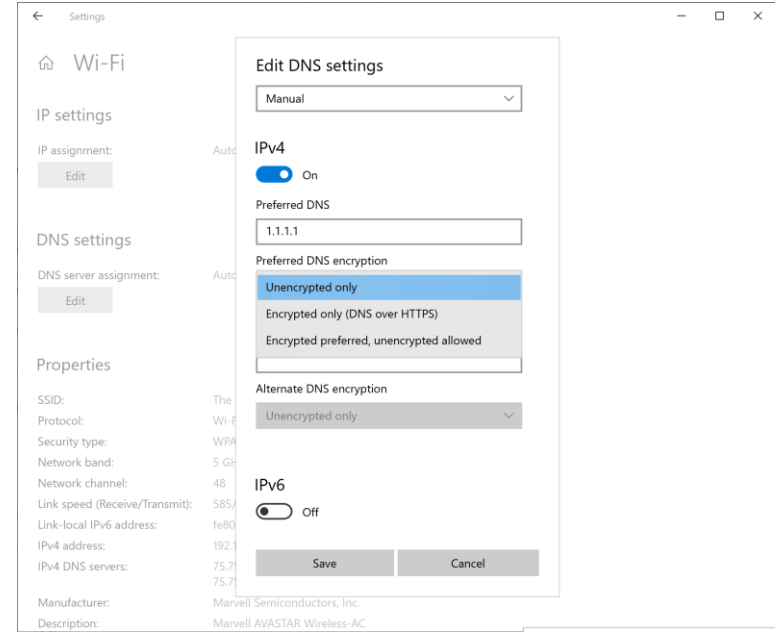
[See cleanup recommendations](#)

Local Disk (C:) - 39.9 GB



This is how your storage is used and how you can free up space.

Temporary files	5.57 GB
Choose which temporary files to remove	
Apps & features	2.55 GB



Grazie

Vito Macina

Microsoft MVP - Windows and Devices for IT
vito.macina@outlook.com



macinando



vitomacina